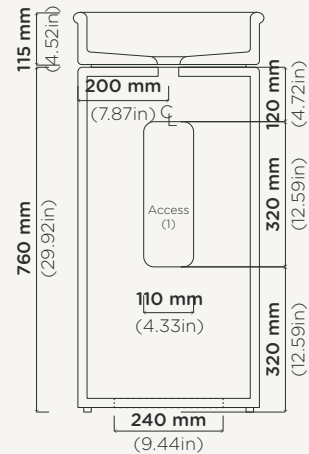


Elevation View



Plan View



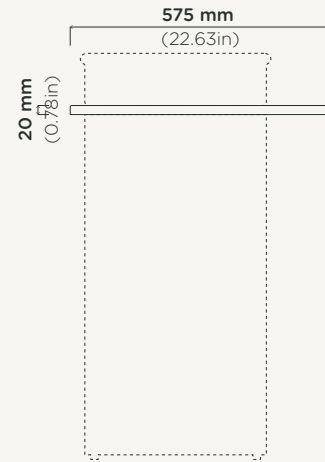
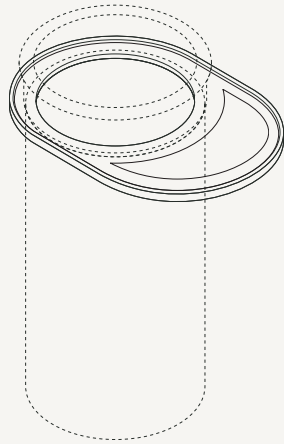
Section View

## Tubb Cylinder

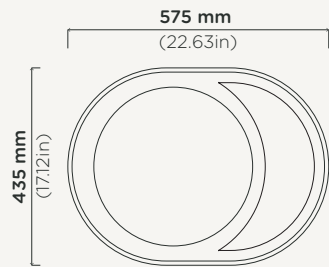
<b>Material</b>	Ultra High Performance Concrete (UHPC)
<b>Weight</b>	28.5kg (62.8lbs) (Cylinder with Basin)
<b>Dimensions</b>	D400mm x H881mm (D15.75in x H34.68in) (floor to top edge of basin)
<b>Tray Option</b>	Left or Right Orientation.
<b>Bowl Capacity</b>	8.4L (2.22gal)
<b>Waste</b>	32mm (1.25in) or 40mm (1.50in) Standard <b>Non-Overflow Waste Only</b> (Not Supplied by Nood Co)
<b>Warranty</b>	Refer to <a href="#">Warranty</a> for specific information
<b>Install Guide</b>	<a href="https://installnood.co">installnood.co</a>
<b>Options</b>	Freestanding   Optional Tray
<b>Wall Mount</b>	L Bracket and fixings provided to fit to wall
<b>Tray</b>	Interchangeable basin, also available with the Fun!, Bowl, Tubb, Stepp Circle or Prism Circle basins
<b>Specifications</b>	See Page 2 for Tray specs

For accurate colour matching, we recommend using our sample kits or visiting an authorised reseller. Natural variations and characteristics, such as patina and pinholes, are to be expected in concrete and do not constitute as defects. As this product is handmade, sizing is subject to slight variation.

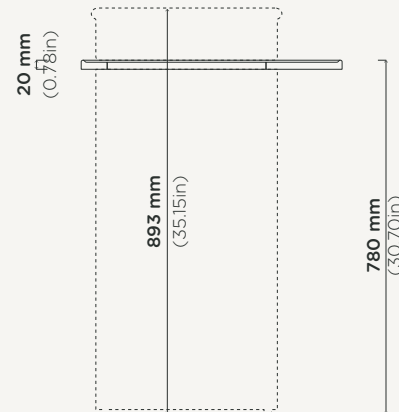
[View Online](#)



Elevation View



Plan View



Section View

## Cylinder Tray (Optional)

<b>Material</b>	Ultra High Performance Concrete (UHPC)
<b>Weight</b>	3.5kg (7.71lbs)
<b>Dimensions</b>	L575mm x W435mm x H20mm (L22.63in x W17.12in x H0.78in)
<b>Available Products</b>	Bowl Cylinder, Hoop Cylinder, Prism Circle Cylinder, Stepp Circle Cylinder, Funl Cylinder and Tubb Cylinder

For accurate colour matching, we recommend using our sample kits or visiting an authorised reseller. Natural variations and characteristics, such as patina and pinholes, are to be expected in concrete and do not constitute as defects. As this product is handmade, sizing is subject to slight variation.